

# NM Rush 98 Nike B97

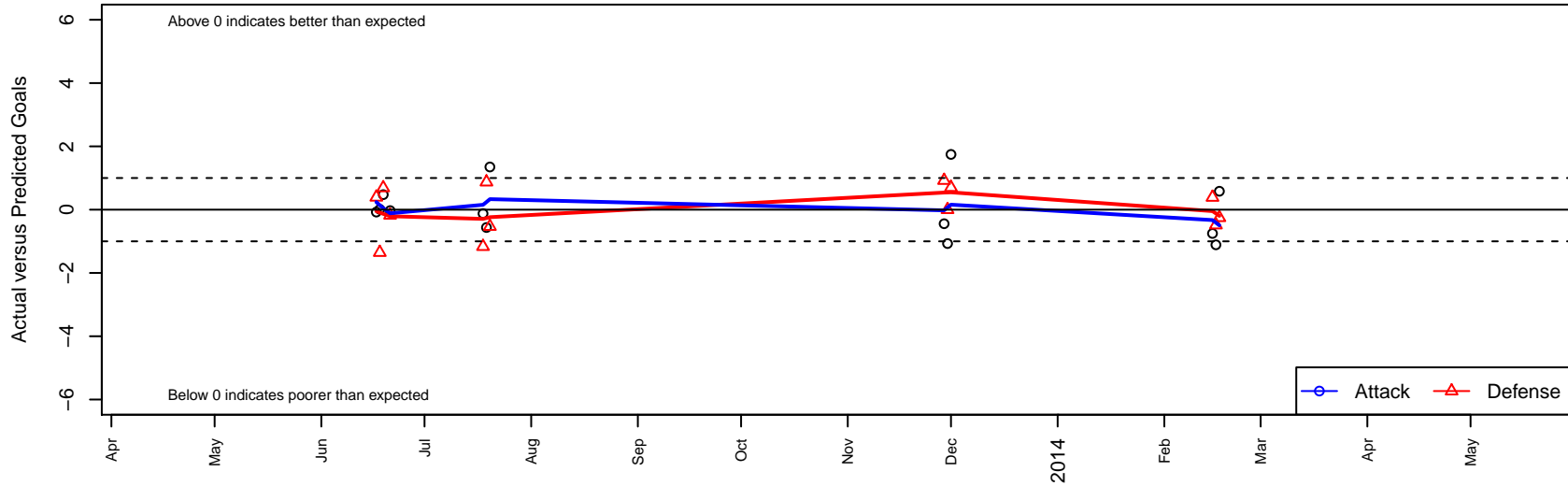
New Mexico Rush Soccer  
 Albuquerque, NM  
 B97 total strength=1846  
 attack=42.56 defense=33.06  
 alt names used:  
 NM Rush 98 Nike B97  
 NM Rush Nike 98 (NM) (SC)  
 New Mexico Rush Nike 98  
 NM Rush Nike 98  
 NM Rush (NM)  
 NEW MEXICO RUSH NM RUSH NIKE 98 (NM)  
 NM RUSH 98B (NM)

Venues played:  
 Far West Regionals U15  
 NPL Championships U15  
 LV Thanksgiving Classic WCDA U16  
 PDT Phoenix WCDA U16



## NM Rush 98 Nike B97

Dots are actual minus expected GF (blue circles) and GA (red triangles).  
 Blue line is smoothed change in attack strength. Red is smoothed change in defense strength.



	<b>date</b>	<b>home</b>		<b>away</b>		<b>venue</b>	<b>pred.home</b>	<b>pred.away</b>
22852	2014-02-17	Arsenal Colorado Gold B97	1	NM Rush 98 Nike B97	5	PDT Phoenix WCDA U16	0.75	4.42
22770	2014-02-16	Colorado Storm North Royal B97	1	NM Rush 98 Nike B97	1	PDT Phoenix WCDA U16	0.52	2.11
22590	2014-02-15	FC Boulder Elite B97	0	NM Rush 98 Nike B97	1	PDT Phoenix WCDA U16	0.39	1.75
20493	2013-12-01	LA Premier B97	1	NM Rush 98 Nike B97	4	LV Thanksgiving Classic WCDA U16	1.70	2.25
20221	2013-11-30	Carlsbad Lightning Elite B97	1	NM Rush 98 Nike B97	0	LV Thanksgiving Classic WCDA U16	1.00	1.07
19764	2013-11-29	NM Rush 98 Nike B97	2	WPFC Black B97	0	LV Thanksgiving Classic WCDA U16	2.44	0.92
3974	2013-07-20	Brooklyn Italians B97	2	NM Rush 98 Nike B97	4	NPL Championships U15	1.47	2.65
3552	2013-07-19	NM Rush 98 Nike B97	1	DMS11 Academy B97	1	NPL Championships U15	1.56	1.87
3361	2013-07-18	New Jersey PDA B97	5	NM Rush 98 Nike B97	0	NPL Championships U15	3.83	0.12
1714	2013-06-21	Santa Barbara SC White B97	3	NM Rush 98 Nike B97	1	Far West Regionals U15	2.82	1.03
1598	2013-06-19	NM Rush 98 Nike B97	2	Sparta United 98 Premier B97	1	Far West Regionals U15	1.52	1.69
1550	2013-06-18	Crossfire Premier 1st -Acad Res B97	3	NM Rush 98 Nike B97	2	Far West Regionals U15	1.65	1.99
1497	2013-06-17	NM Rush 98 Nike B97	2	Hawaii Riggers Alakai B97	0	Far West Regionals U15	2.08	0.39